

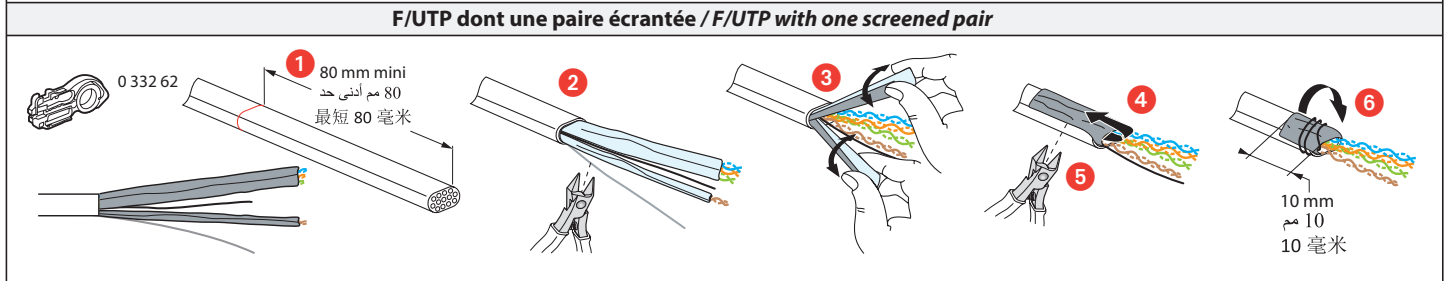
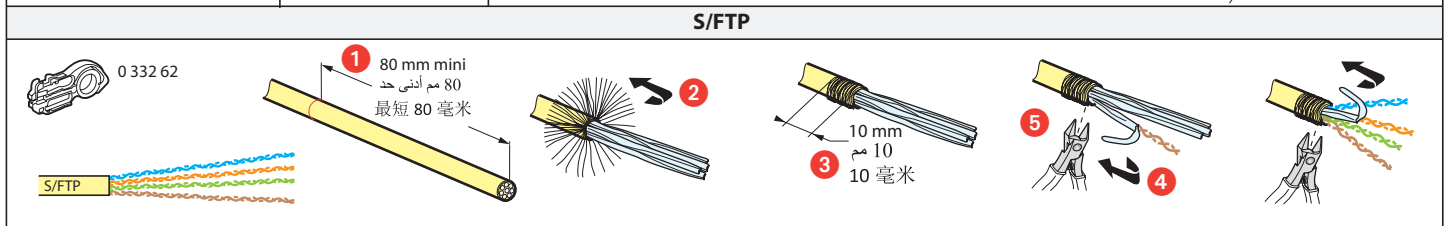
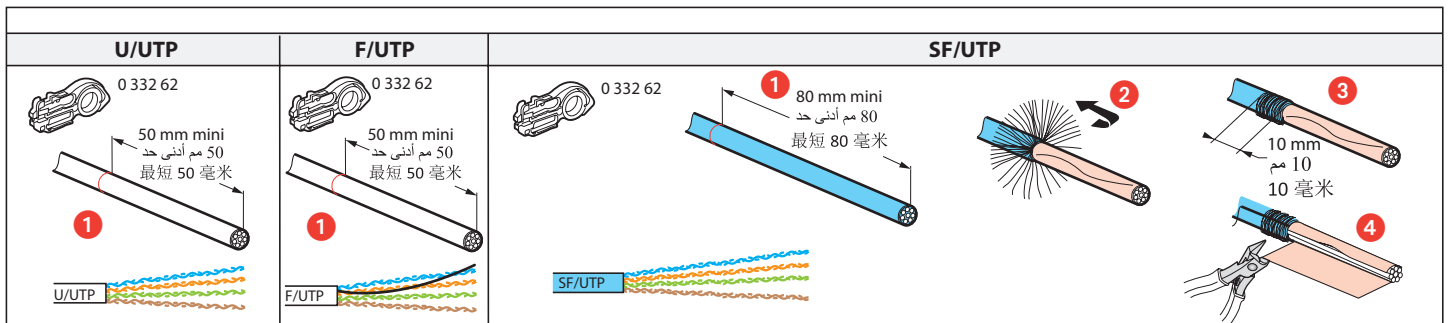
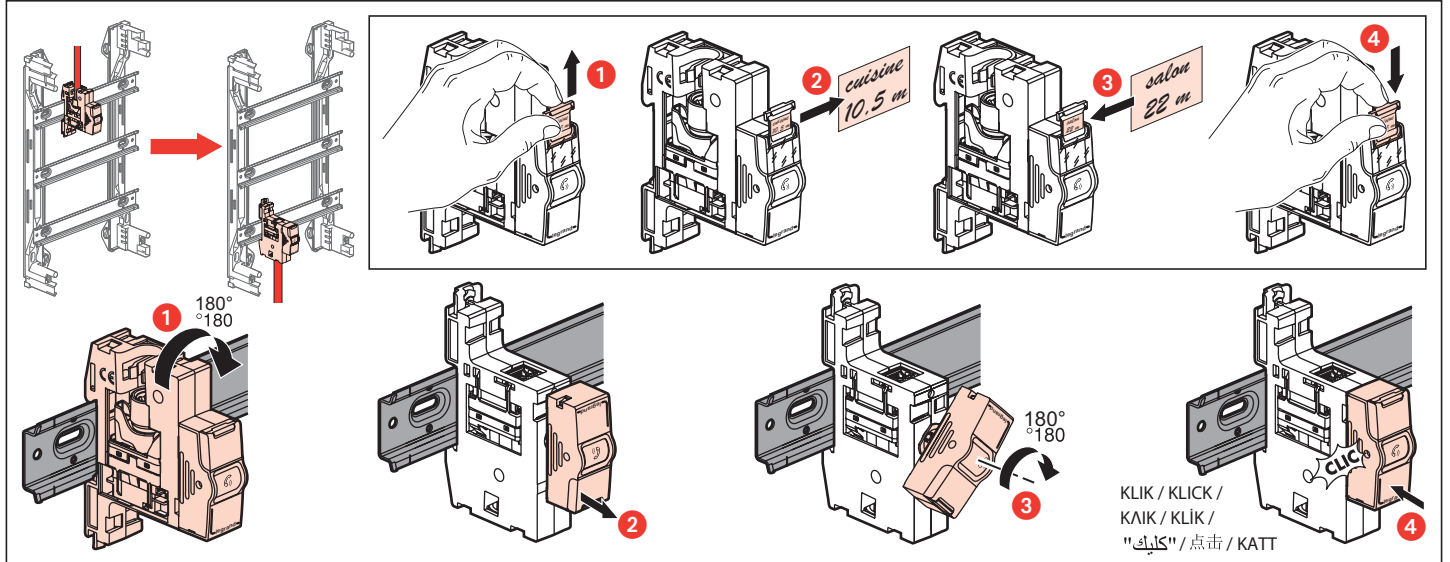
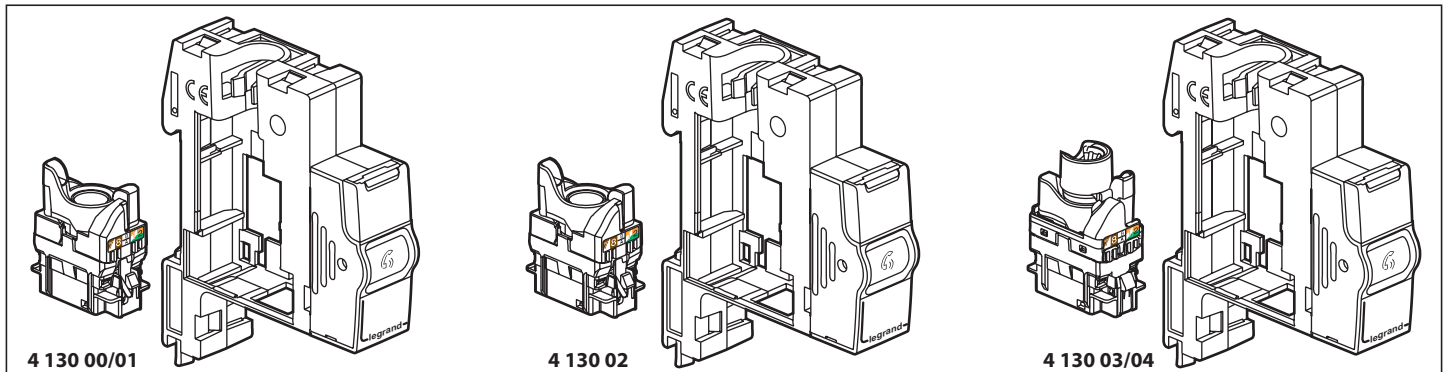
- Module de brassage UTP/FTP/STP
- Verdeelmodule UTP/FTP/STP
- UTP/FTP/STP patching module
- Verteilungsmodul UTP/FTP/STP
- Módulo de mezcla UTP/FTP/STP
- Módulo de distribuição UTP/FTP/STP

4 130 00/01/02/03/04

- Μονάδα ανάμειξης UTP/FTP/STP
- Патч-модуль UTP/FTP/STP
- Aktarma modülü UTP/FTP/STP
- وحدة جميع STP/FTP/UTP
- UTP (非屏蔽双绞线) /FTP (铝箔屏蔽网络线) /STP (双屏蔽网络线) 混合模块

- Modulo di commutazione UTP/FTP/STP
- Moduł krosowania UTP/FTP/STP
- UTP/FTP/STP bekötő modul

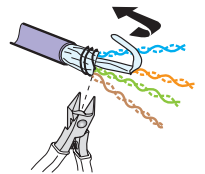
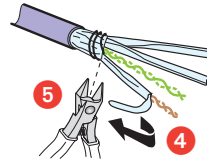
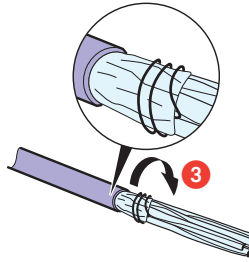
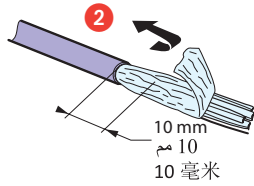
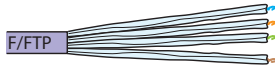
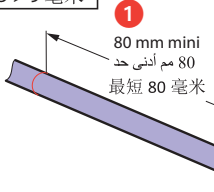
legrand®



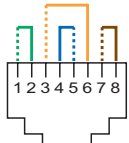
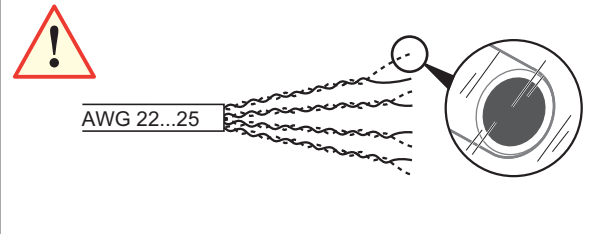
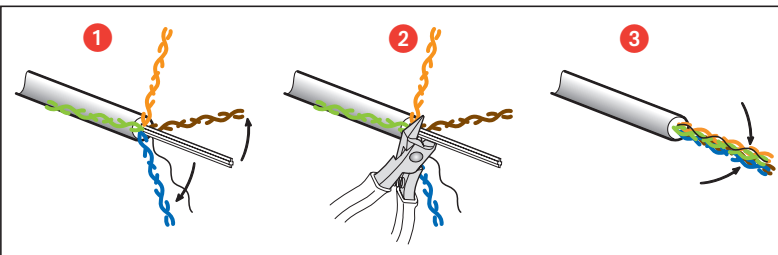
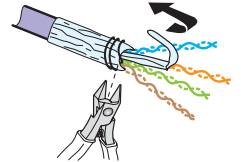
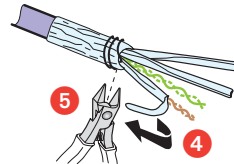
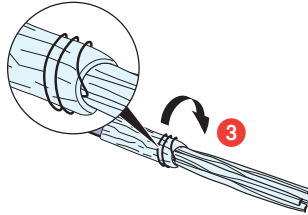
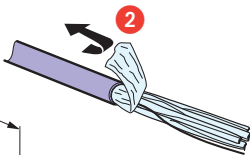
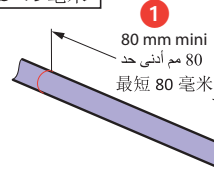
F/FTP



$\varnothing > 9 \text{ mm}$
 $\varnothing > 9 \text{ mm}$
 $\varnothing > 9 \text{ mm}$

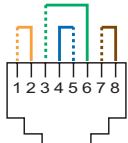


$\varnothing < 9 \text{ mm}$
 $\varnothing < 9 \text{ mm}$
 $\varnothing < 9 \text{ mm}$



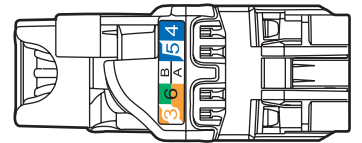
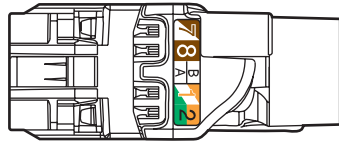
EIA 568 A

EIA (美国电子工业协会) 568 A 标准



EIA 568 B

EIA 568 B 标准

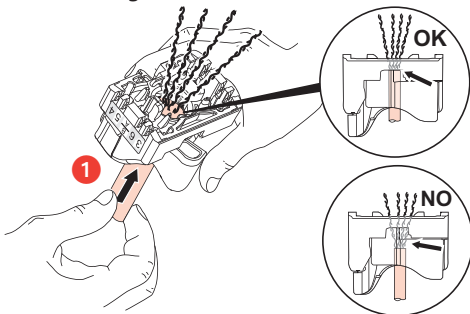


UTP / UTP نمط

FTP Cat 5e - Cat 6 / FTP Kat 5e - Kat 6

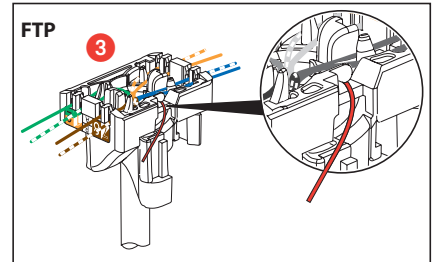
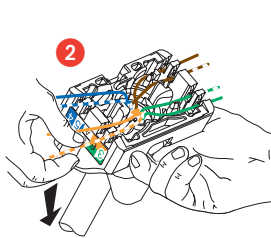
FTP Kar. 5e - Kar. 6 / FTP 超 5 类 - 6 类线缆 /

FTP 5e - 6 kategória



UTP/FTP نمط

UTP/FTP نمط

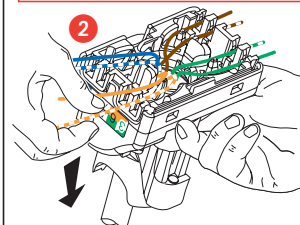
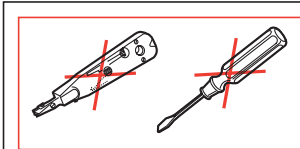
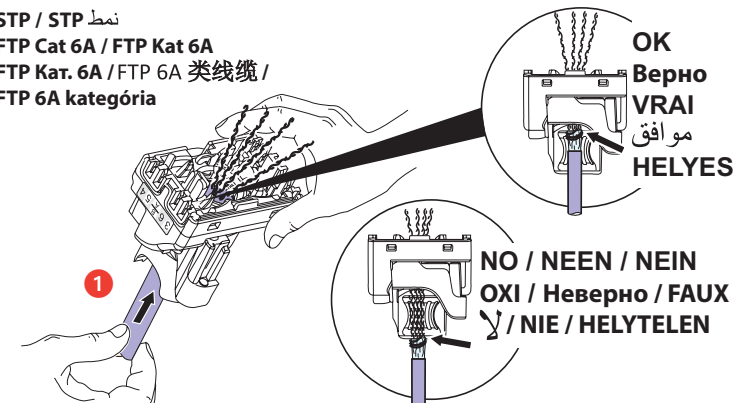


STP / STP نمط

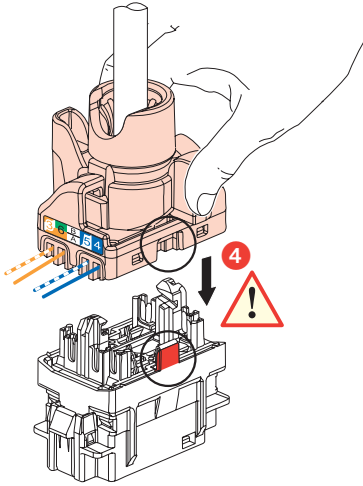
FTP Cat 6A / FTP Kat 6A

FTP Kar. 6A / FTP 6A 类线缆 /

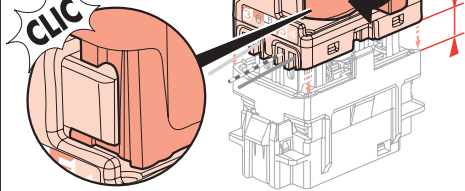
FTP 6A kategória



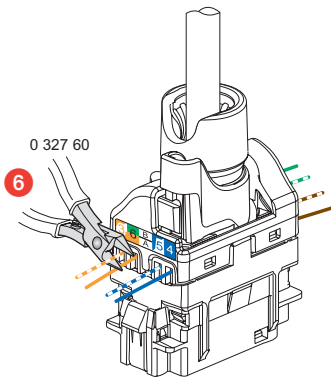
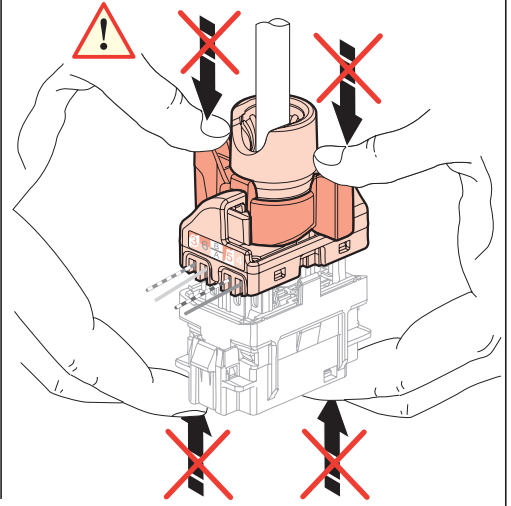
5 OK / Верно / VRAI /
موافق / HELYES



KLIK
KLICK
KAIK
KLIK
"كليك"
点击
KATT

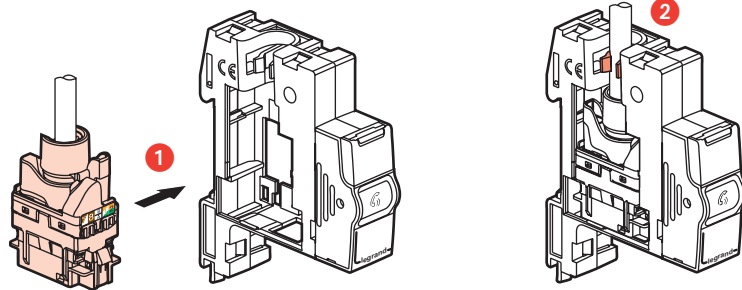
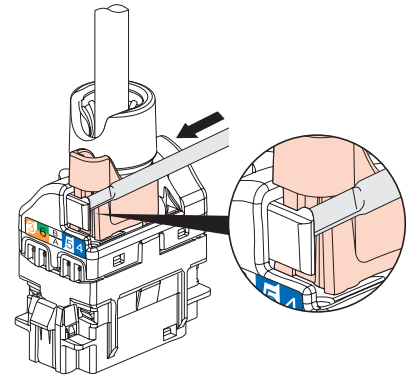
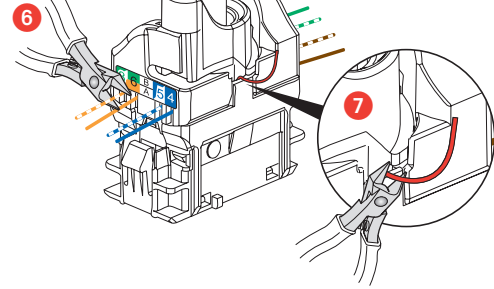


5 NO / NEEN / NEIN / OXI / Неверно /
FAUX / ❌ / NIE / HELYTELEN ❌



FTP
FTP نمط

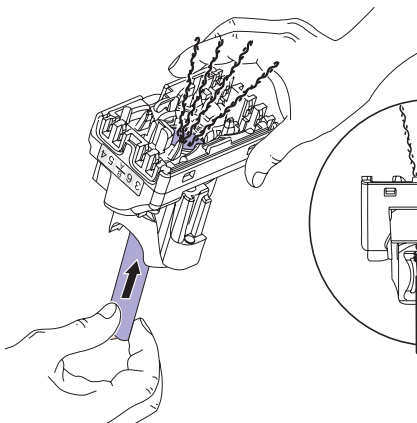
0 327 60



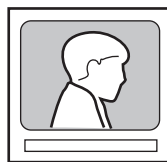
- Conséquence de mauvais contacts
- Gevolg van slechte contacten
- Consequence of poor contacts
- Folge falscher Kontakte
- Consequencia de malos contactos

- Consequência de maus contactos
- Συνέπεια των κακών επαφών
- Последствие слабых контактов
- Yetersiz temasın sonucu
- نتيجة توصيل غير صحيح

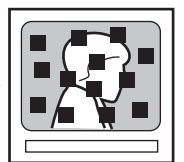
- 错误连接的后果
- Consequenza di contatti scadenti
- Konsekwencje złego kontaktowania
- A nem megfelelő érintkezés következménye

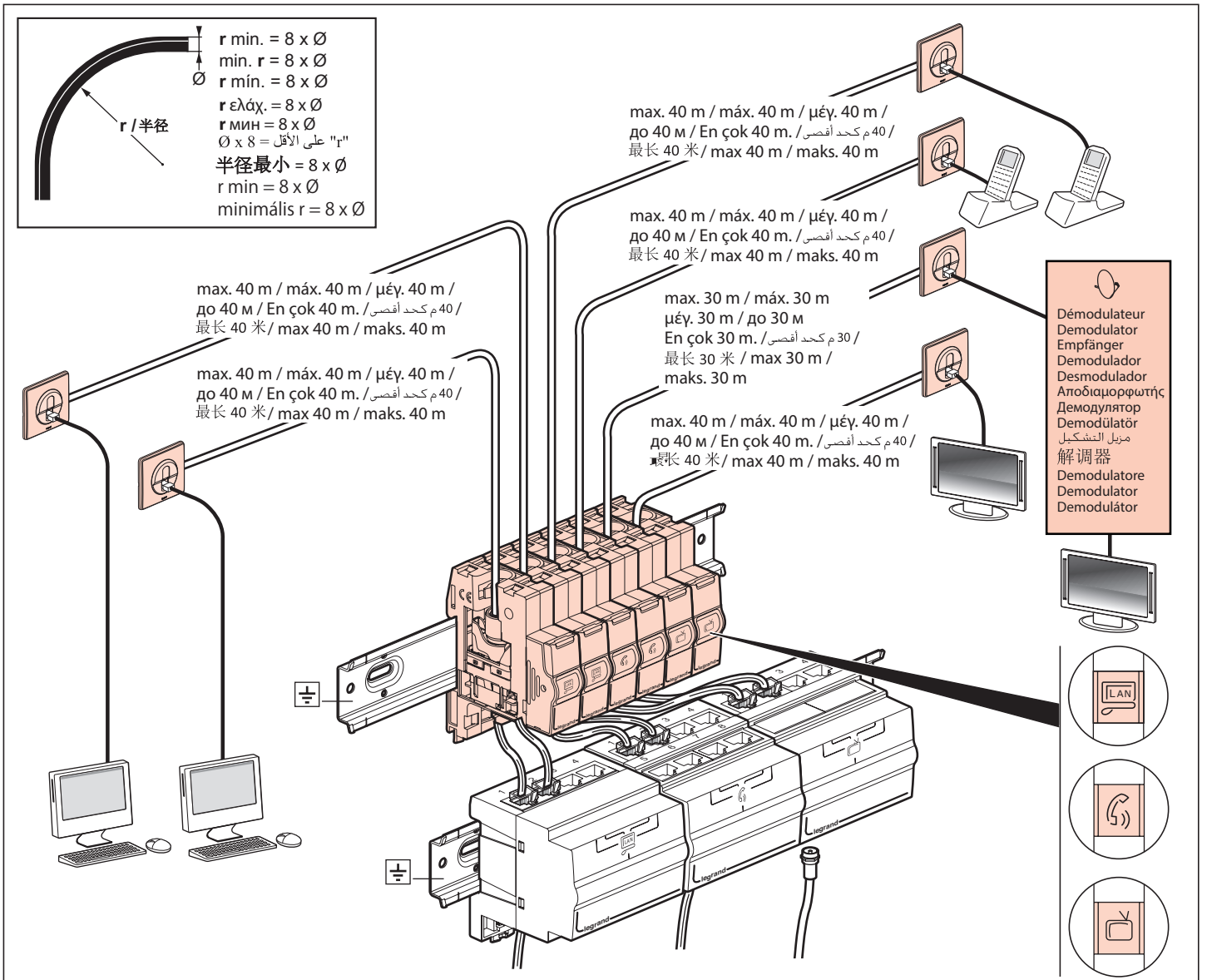


OK
Верно
VRAI
موافق
HELYES



NO
NEEN
NEIN
OXI
Неверно
FAUX
❌
NIE
HELYTELEN





⚠ Consignes de sécurité

Avant toute intervention, couper le courant.
Respecter strictement les conditions d'installation et d'utilisation.

⚠ Veiligheidsinstructies

Sluit de stroom af voordat u aan de slag gaat.
Neem zorgvuldig de installatie- en gebruikvoorwaarden in acht.

⚠ Safety instructions

Make sure the power supply is disconnected before any intervention.
Strictly comply with instructions for installation and use.

⚠ Sicherheitshinweise

Vor jeglichem Eingriff die Spannungsfreiheit sicherstellen.
Einbau- und Gebrauchsanleitungen sind genau zu beachten.

⚠ Consignas de seguridad

Antes de realizar cualquier intervención, cortar la corriente eléctrica.
Respetar estrictamente las condiciones de instalación y uso.

⚠ Instruções de segurança

Antes de qualquer intervenção, cortar a corrente.
Respeitar estritamente as condições de instalação e de utilização.

⚠ Οδηγίες ασφαλείας

Πριν από κάθε παρέμβαση, διακόψτε την παροχή ρεύματος.
Τηρήστε αυστηρά τις συνθήκες εγκατάστασης και χρήσης.

⚠ Меры предосторожности

Отключить питание перед проведением любых ремонтных работ.
Строго соблюдайте требования к условиям монтажа и эксплуатации.

FR LU BE

⚠ Güvenlik talimatları

Her türlü müdahale öncesinde, elektrik akımını kesiniz.
Kurulum ve kullanım koşullarına kesinlikle uyunuz.

TR CY

NL BE

⚠ إرشادات الأمان:

"اقطع التيار الكهربائي، قبل أي تدخل. تقيّد تقيداً تاماً بشروط الترتيب والاستخدام."

GB IE

⚠ 安全警示

在进行任何作业前，请切断电源。
请严格遵守相关安装和使用条件的要求。

DE

⚠ Istruzioni di sicurezza

Prima di effettuare qualsiasi intervento, togliere la corrente.
Rispettare scrupolosamente le condizioni di installazione e d'uso.

IT CH

ES

⚠ Zalecenia bezpieczeństwa

Przed przystąpieniem do prac należy odłączyć zasilanie.
Ścisłe przestrzegać warunków instalacji i użytkowania.

PL

PT

⚠ Biztonsági előírások

Bármilyen beavatkozás előtt szakítsa meg az áramellátást.
A beszerelési és használati előírásokat szigorúan be kell tartani.

HU

GR CY

RU